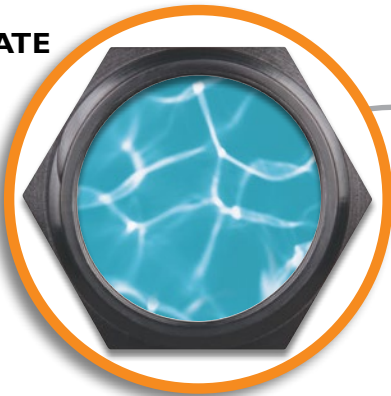


HIGH FLOW RATE

Fittings demonstrate excellent hydraulic flow characteristics



AS/NZS 4020



POTABLE WATER APPROVED

Material Approved for use with Potable (drinkable) Water



MAXIMUM WORKING PRESSURE

Sizes 15 - 50mm (1/2" to 2") 16 Bar (232 psi) @ 20°C
Sizes 80 - 100mm (3" - 4") 10 Bar (145 psi) @ 20°C

FAST AND EASY TO INSTALL

No specialist skill required.
Apply threaded sealant or tape, screw on pipe, tighten.*



3. Tighten

1. Apply Thread Sealant or Thread Tape

2. Screw on pipe

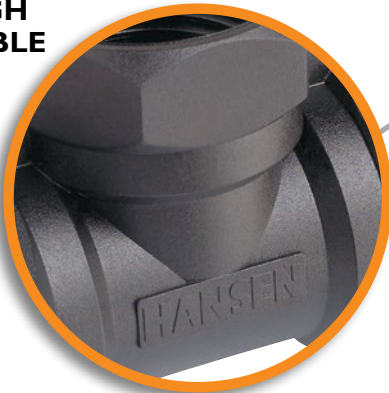
PRECISION HEAVY DUTY TAPERED THREADS

Gives a Strong Reliable Seal. Material is strong enough to minimise potential cross threading.



MADE FROM HIGH QUALITY DURABLE MATERIALS

Manufactured from UV Stabilised High Quality Glass Fibre Reinforced Nylon giving a weather, termite, fungi and bacterial resistance



LARGE RANGE

of over 180 Durable, High Strength, Commercial Quality True Fit Pipe Fittings available in sizes 6mm to 100mm (1/8" to 4")



*We recommend Loctite 5331 thread sealant. All pipe work must be adequately supported.

HANSEN™

True Fit Threaded Fittings

Reliable Commercial Quality Threaded Fittings

www.hansenproducts.com